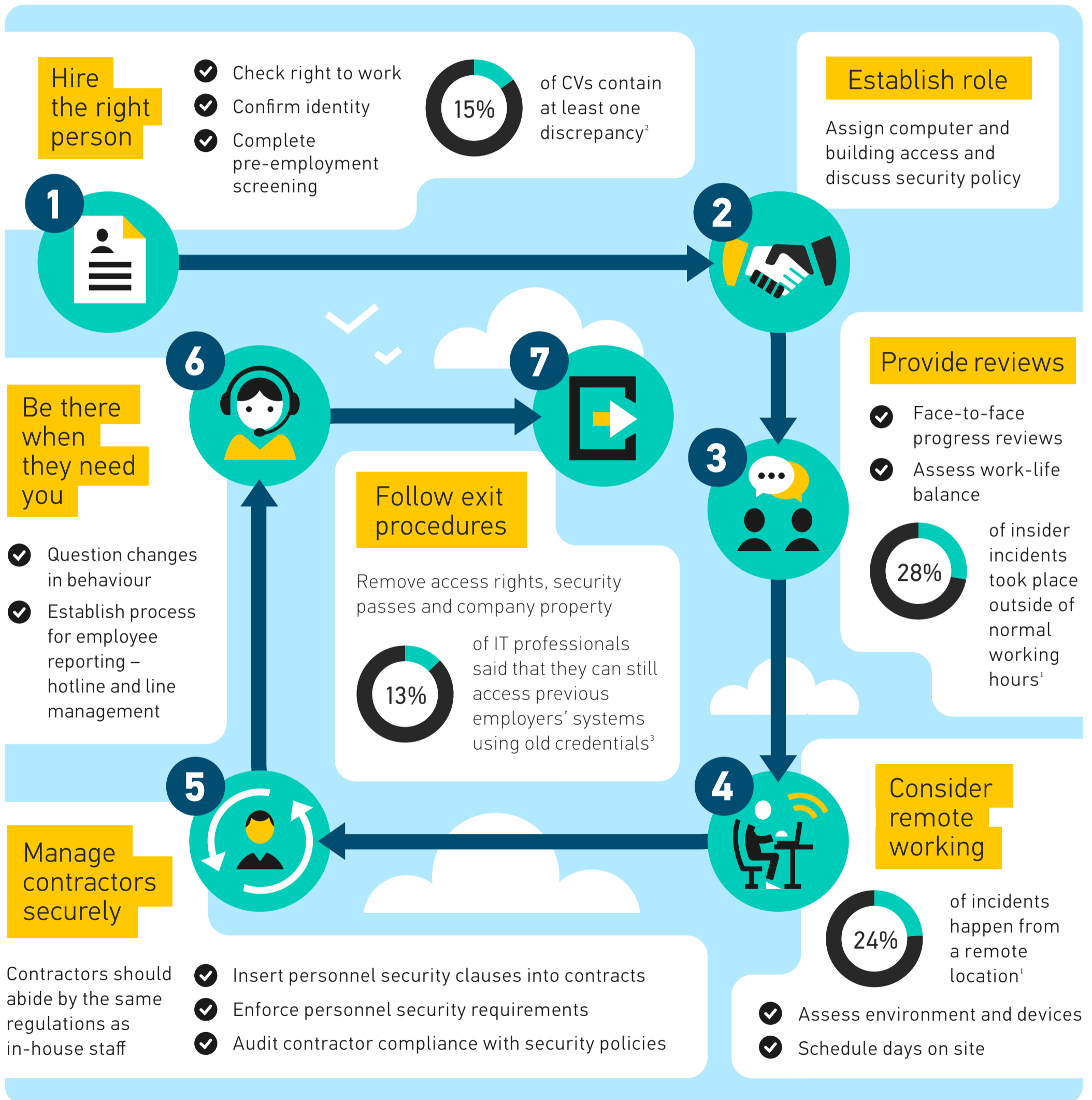


Are you thinking about it?

Organisations should consider Personnel Security measures from the moment they employ someone to the moment they leave.



While pre-employment screening helps with recruitment, organisations need to monitor attitude changes and events that can affect employees over time.

FOR MORE INFORMATION PLEASE READ ONGOING PERSONNEL SECURITY: A GOOD PRACTICE GUIDE, AT WWW.NPSA.GOV.UK

REFERENCES: 1. CERT (<http://www.cert.org/blogs/insider-threat/post.cfm?EntryID=182>); 2. The Security Company International (http://www.thesecurityco.com/media/40631/Whitepaper-insider-threat_January2013.pdf); 3. Lieberman Software (<http://www.liebssoft.com/More-Than-1-in-8-IT-Security-Pros-Can-Access-Previous-Employer-Systems-Using-Old-Credentials/>)